

PLEASE CHECK WWW.MOLEX.COM FOR LATEST PART INFORMATION

Part Number: [0918139103](#)
Status: **Active**
Overview: [kk](#)
Description: 5.08 (.200") Pitch, KK®, CRP Terminal HSG, Glow Wire compatible, 3 Circuits, White, with Ramp, Glow Wire Compatible

Documents:

[3D Model](#) [RoHS Certificate of Compliance \(PDF\)](#)
[Drawing \(PDF\)](#)

General

Product Family	Crimp Housings
Series	91813
Overview	kk
Product Name	KK®

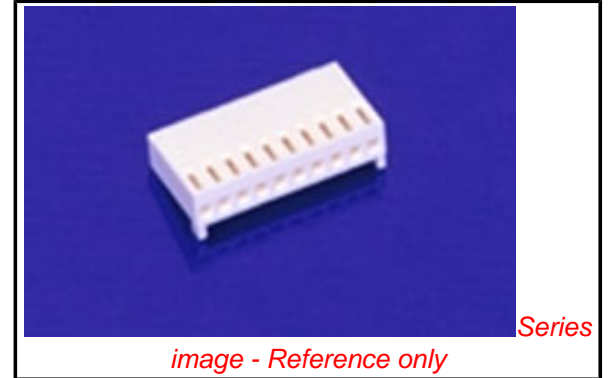
Physical

Breakaway	No
Circuits (maximum)	3
Color - Resin	Natural (White)
Gender	Female
Glow-Wire Compliant	Yes
Material - Resin	Nylon
Number of Rows	1
Packaging Type	Bag
Panel Mount	No
Pitch - Mating Interface (in)	0.200 In
Pitch - Mating Interface (mm)	5.08 mm
Pitch - Term. Interface (in)	0.200 In
Pitch - Term. Interface (mm)	5.08 mm
Polarized to Mating Part	Yes
Ports	1
Stackable	No
Temperature Range - Operating	0°C to +75°C

Material Info

Reference - Drawing Numbers

Sales Drawing	SD-91813-001
---------------	--------------



EU RoHS
ELV and RoHS
Compliant
REACH SVHC
 Not Reviewed
Halogen-Free
Status
Not Reviewed

China RoHS

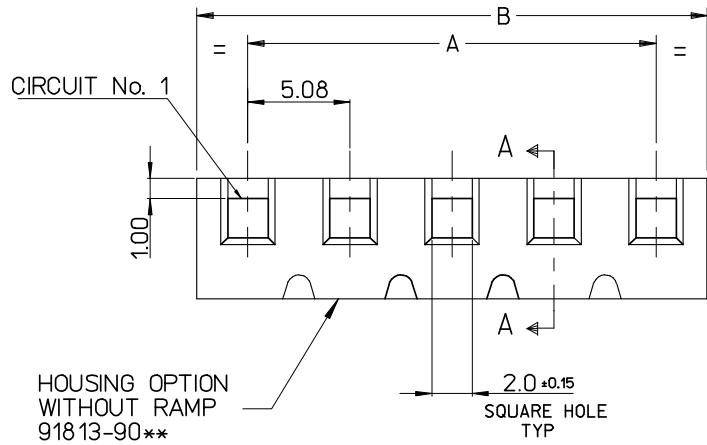


Need more information on product environmental compliance?

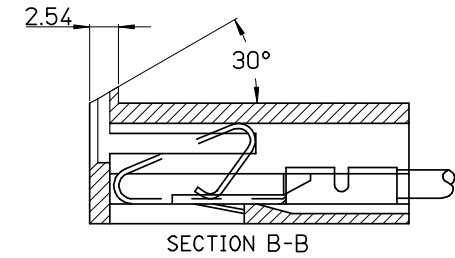
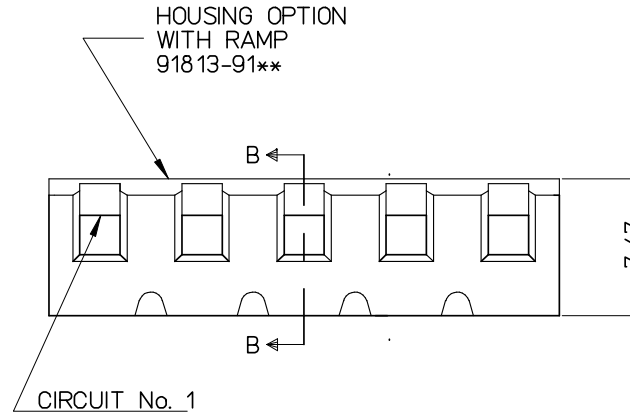
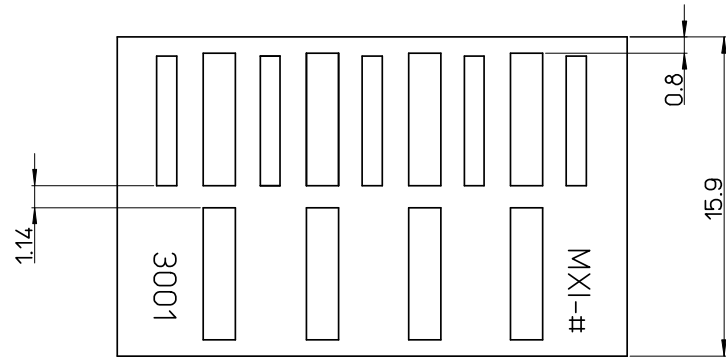
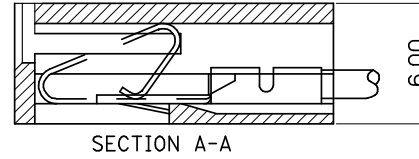
Email productcompliance@molex.com
 For a multiple part number RoHS Certificate of Compliance, [click here](#)

Please visit the [Contact Us](#) section for any non-product compliance questions.

Search Parts in this Series
[91813Series](#)



1.14 REF. ROUND OR SQUARE PIN.



20	91813-9020	91813-9120	96.52 ± .3	101.60 ^{+0.24}
19	-9019	-9119	91.44 ± 0.3	96.52 ^{+0.24}
18	-9018	-9118	86.36 ± 0.3	91.44 ^{+0.24}
17	-9017	-9117	81.28 ± 0.3	86.36 ^{+0.24}
16	-9016	-9116	76.20 ± 0.25	81.28 ^{+0.24}
15	-9015	-9115	71.12 ± 0.25	76.20 ^{+0.24}
14	-9014	-9114	66.04 ± 0.25	71.12 ^{+0.24}
13	-9013	-9113	60.96 ± 0.25	66.04 ^{+0.24}
12	-9012	-9112	55.88 ± 0.25	60.96 ^{+0.24}
11	-9011	-9111	50.80 ± 0.20	55.88 ^{+0.24}
10	-9010	-9110	45.72 ± 0.20	50.80 ^{+0.24}
9	-9009	-9109	40.64 ± 0.20	45.72 ^{+0.24}
8	-9008	-9108	35.56 ± 0.20	40.64 ^{+0.24}
7	-9007	-9107	30.48 ± 0.20	35.56 ^{+0.24}
6	-9006	-9106	25.40 ± 0.10	30.48 ^{+0.24}
5	-9005	-9105	20.32 ± 0.10	25.40 ^{+0.15}
4	-9004	-9104	15.24 ± 0.10	20.32 ^{+0.15}
3	-9003	-9103	10.16 ± 0.10	15.24 ^{+0.15}
2	91813-9002	91813-9102	5.08 ± 0.10	10.16 ^{+0.15}
			A	B
			DIMENSION	

NOTE:

1. MATERIAL: POLAMIDE (PA6), UL-94 V-2
COLOUR WHITE
2. THIS HOUSING USES KK TERM. No's. 2478, 2578 & 2878
3. COLOUR VARIATION MAY BE VISIBLE ON THE HOUSING SURFACES
4. PRODUCT SPECIFICATION: PS-99020-0087

ADDED PROD. SPEC EC NO: E2008-0301 DRWN: ILK/ERNAN 2008/02/04 CHKD: 2008/02/06 APPR: BMAGUIRE 2008/02/07	QUALITY SYMBOLS 	GENERAL TOLERANCES (UNLESS SPECIFIED)		DIMENSION STYLE MM ONLY		SCALE 7:1	DESIGN UNITS METRIC	THIRD ANGLE PROJECTION		
		4 PLACES ± --- ± ---	3 PLACES ± --- ± ---	2 PLACES ± 0.25 ± ---	1 PLACE ± 0.35 ± ---	DRAWN BY DATE DWASZKIEWICZ 2006/06/08	TITLE 5.08MM KK CRP TERM HSG GLOW WIRE COMPATIBLE	MOLEX INCORPORATED		
		ANGULAR ± 1/2°				CHECKED BY DATE J. DENNEHY	APPROVED BY DATE J. DENNEHY			
		DRAFT WHERE APPLICABLE MUST REMAIN WITHIN DIMENSIONS				MATERIAL NO. SEE CHART	DOCUMENT NO. SD-91813-001	SHEET NO. 1 OF 1		